



A Sustainable Community for a Sustainable World

NGO (Non-governmental Organization)
Since 1986

2013

SALGA DEL MOLDE



EXPLORE Campa las Hormiguitas INSTITUTO MONTEVERDE



“Hormiguitas” Exploring!



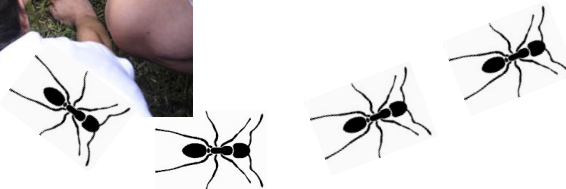
Youth from 7 different communities within Monteverde joined to explore, laugh and enjoy with new friends.

Once again our local camp fostered healthy connections between youth and other community members. The campers were part of fun and educational activities such as cane grinding with a bicycle, passing through flying tires as a team, and learning about emotions and sexuality.

The camp promotes team work through creative exercises such as cross-country

games. “What fun were they (different cross-country challenges)!... It must be repeated!” It is essential to learn how to work as a team. Every day we make use of it –at school, at work, at home– even with your life partner. We need to be creative, supportive and know how to enjoy in order to work as a team!

Activities have different approaches to empower youth: “We loved painting the banners in downtown Santa Elena– people saw us” commented several campers who painted camp values on a cloth banner. “This activity makes an impact, a contact with the community”.



Focused Themes

- Art & Creativity
- Personal Reflection
- Sports
- Sexual Health
- Community Service
- No drug dependency
- Farm Work



Meet us!

Activities, values, length and other. Find us on Facebook!

<https://www.facebook.com/campamentolashormiguitasIMV>



campamento@mvinstitute.org

VISION

Create a safe, educational and fun space for local youth.

MISSION

Develop healthy and educational links between Monteverde’s youth and its community members.

Join Us!!

In 2014 we will continue this amazing experience! It is essential for a healthy youth and a sustainable future in our community.





Apto. 69-5655
 Monteverde, Puntarenas
 Costa Rica, Central America

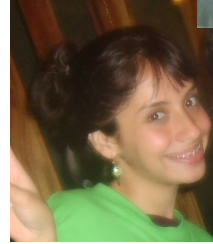
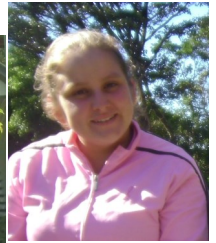
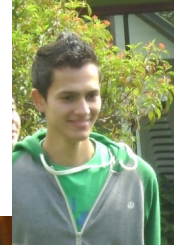
Phone: (506) 2645-5053
 Fax: (506) 2645-5365
 E-mail: info@mvinstitute.org

www.monteverde-institute.org

“Líderes” 2013

Alejandra Fonseca Rodríguez
 Daniel Leitón Obando
 Denise Mata Ardón
 Eduardo Leitón Araya
 Erick Villalobos

Ignacio Picado Fallas
 Jennifer Lobo Brenes
 Joselyn Arguedas Villalobos
 Luis Antonio Santamaría Abarca
 Paola Rojas Cruz



Mentors 2013

Adriana Santamaría –Life choices
Frank Joyce– Biology walk
Greivin Corrales– Snake workshop

Guillermo Vargas– Director’s
 Assistant; Farm Work

John Porras, Michael Cruz, Kenneth

Guzmán– High and Low Ropes

Jonathan Ogle– Activity Specialist:
 leader’s guide

Juan Manuel Santamaría– Farm Work

Kimberly Acosta-Cruz– Child Life
 Specialist; leader’s guide

Margarita Murillo y María Ramírez
 Sexuality and Affection

Marie Chantal– Art

Noé Vargas– Conservation

Mark Wainwright– Biology walk

Richard Joyce– Biology walk

Robert & Margie Howe– Camp
 Specialists

Great Support

- Auto Transportes Alvarado
- Bajo del Tigre
- Cloud Forest Tree Climbing
- Corredor Biológico Pájaro Campana
- Escuela de los Amigos de Monteverde
- EXtremo Canopy
- FUDHI
- Fundación Conservacionista Costarricense
- Iglesia Católica– uso Salón Parroquial
- La Calandria
- Life Monteverde
- Reserva Biológica Bosque Nuboso Monteverde
- Reserva Curi Cancha
- Reserva Rachel & Dwight Crandell
- Transporte Odilio Castro

Essential Hands

- Arelis Guido
- Ashley Gora
- Bertalía Rodríguez
- Claudia Rocha
- Daisy Picado
- Elieth Rodríguez
- Justin Welch
- Marlene Leitón
- Ran, Nicolette & Shannon Smith
- Seidy Torres Leitón
- Selena Avendaño
- Tony Salazar
- Zoraida Brenes

